

Secondary- and Large-size Display Units



- Highcontrast, easily-readable display
- Rugged industrial design
- Protection type as far as IP65
- Temperature range to $-30 \dots +60^{\circ}\text{C}$
- Legal-for-trade

Application

The digital display units are designed for large-size display of weight values. They are used on all industrial weighing systems which require the weight to be read from long distances, e.g. crane scales, scales for racking systems, road weigh-bridges.

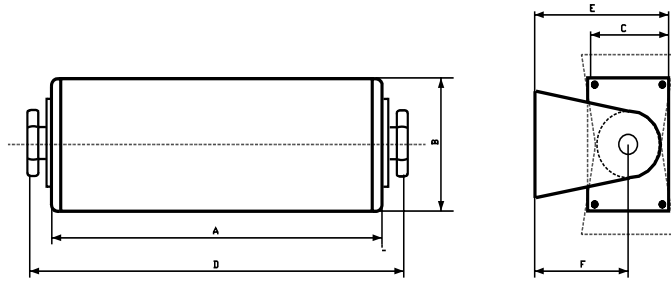
Equipment

The display uses either LED- or LCD-technology, depending on type. The swivel housings are fixed with mounting brackets.

Functions

Display of the weight value with additional symbols for sign, unit and operating status.

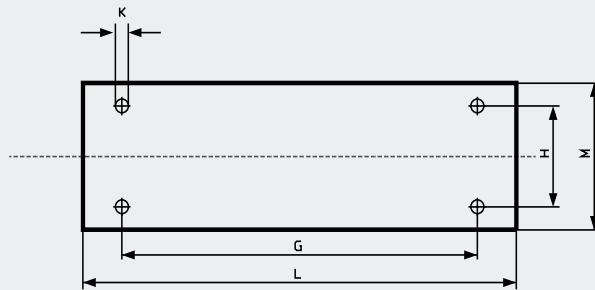
Display dimensions



DLZ 055

Dimensions in mm	A	B	C	D	E	F	G	H	K	L	M
DLZ 055	470	181	109	541	190	135	380	70	Ø 12	480	110
DLZ 111	945	181	109	1019	190	135	855	70	Ø 12	955	110

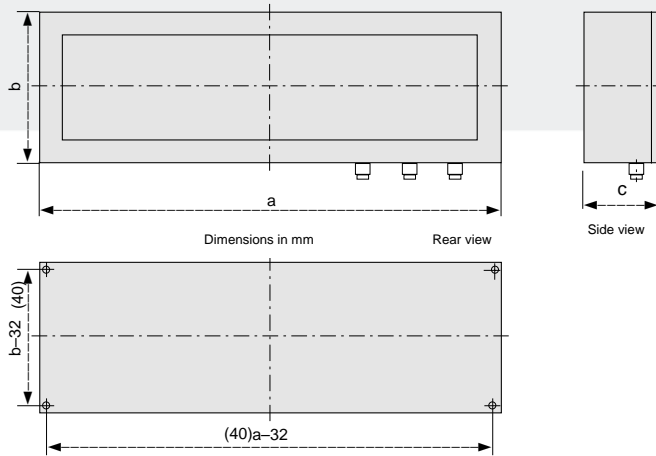
Mounting bracket dimensions



DLZ 111



DLS 160-250

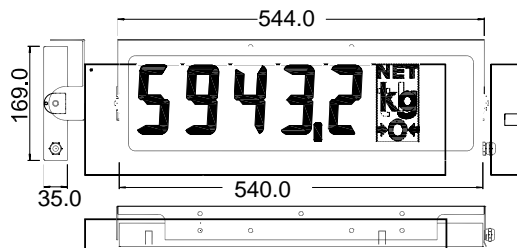


Dimensions in brackets apply to variants with 160 and 250 m digit height.

Dimensions in mm	a	b	c
DLS 160	1100	300	145
DLS 250	1730	400	165

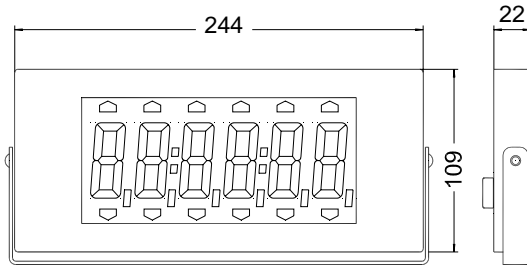


VLZ 20100

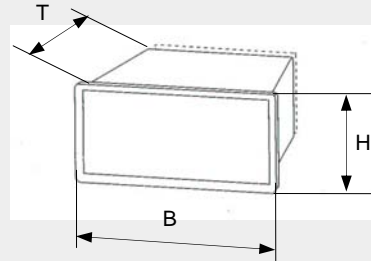
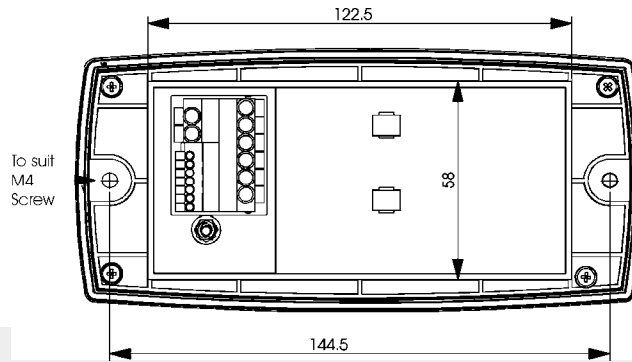




VLZ 20045



VAG 20200-D

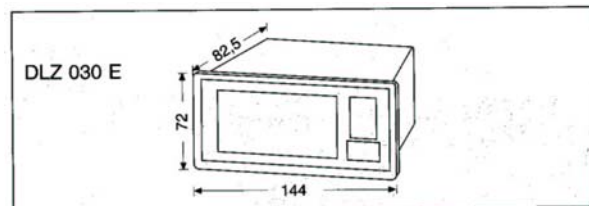


Dimensions in mm	B	H	T	Cut-out
VLZ 20151	96	48	115	92 x 45
VLZ 20250	144	72	72	138 x 68

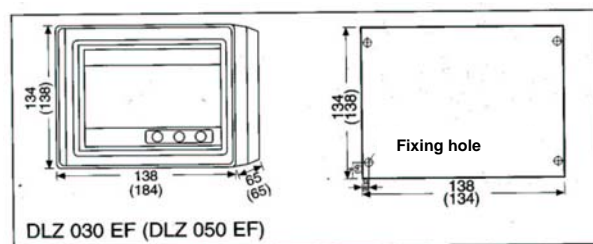
VLZ 20151
VLZ 20250



DLZ 030 E



DLZ 030 EF
DLZ 050 EF



Technical Data

	DLZ 055	DLZ 111	DLS 160	DLS 250	VLZ 20100	VLZ 20045
Display principle	LED		LED		LCD	
Colour	Digits red, matrix yellow		Red		Orange	
Number of digits	5		5		5	6
Digit height [mm]	55	111	160	250	100	45
Unit	g / kg / t		g / kg / t		g, kg, t, lb	
Status display	Zero, tare, net		Zero, tare, net, no-motion		Zero, tare, net	
	Printing active					
Reading distance	25 m	50 m	60 m	100 m	40 m	15 m
Protection type	IP 54		IP 54		IP 65	
Temperature range	-10 ...+50°C		0 ... 55°C		-30 - +60°C	
Legal-for-trade	Yes		Yes		Yes	No
Mounting variant	Floor, wall and ceiling mounting		Floor, wall and ceiling mounting		Wall or ceiling mounting	
Weight apr.	ca. 7 kg	ca. 11 kg	ca. 21 kg	ca. 40 kg	4,5 kg	0,8 kg
Swivel-mounted	Yes		No, bracket for swivel- mounting available as option		Yes	
Data interface	RS 423, RS 232		RS232		RS 232, RS 48, TTY 20mA	
Power supply	100 ... 240 V AC (47 ... 63 Hz)		230 VAC +15/-10 % (47 ... 63 Hz)		24 VDC, 100mA	
Max. cable length apr.	100 m		100 m		600 m	
Order No.	E 909 053.01/02		E 909 054.02/04		V066611.B01	V067304.B01

	VLZ 20151	VLZ 20250	DLS 030E / DLZ 030EF / DLZ 050EF	VAG 20200-D
Display principle	LED, 7-Segment		LCD	
Colour	Red		Black	
Number of digits	6	5	4	
Digit height [mm]	14	25	30 / 30 / 50	
Unit	g / kg / t		Selectable	
Protection type	IP 40, optional IP 65	IP 40	IP 40 / IP 65 / IP 65	
Temperature range	0 ...60°C		-10 - 50°C; 65°C; T5	
Legal-for-trade	No	No	No	
Explosion-proof design	No		Eex ib IIC T6 for ATEX Zone 1	
Mounting variant	Panel-mounting		Panel-mounting / filed housing / filed housing	
Data interface	RS 232, RS 422/ 485/TTY 20mA		Analog 4 – 20mA	
Power supply	16-30VDC, 230VAC optional		---	
Max. cable length apr.	100 m		750 m	
Order No.	V036225. B01/B02	E054593.01	E909034.01 / E909034.02 / E909033.01	V070449.B01